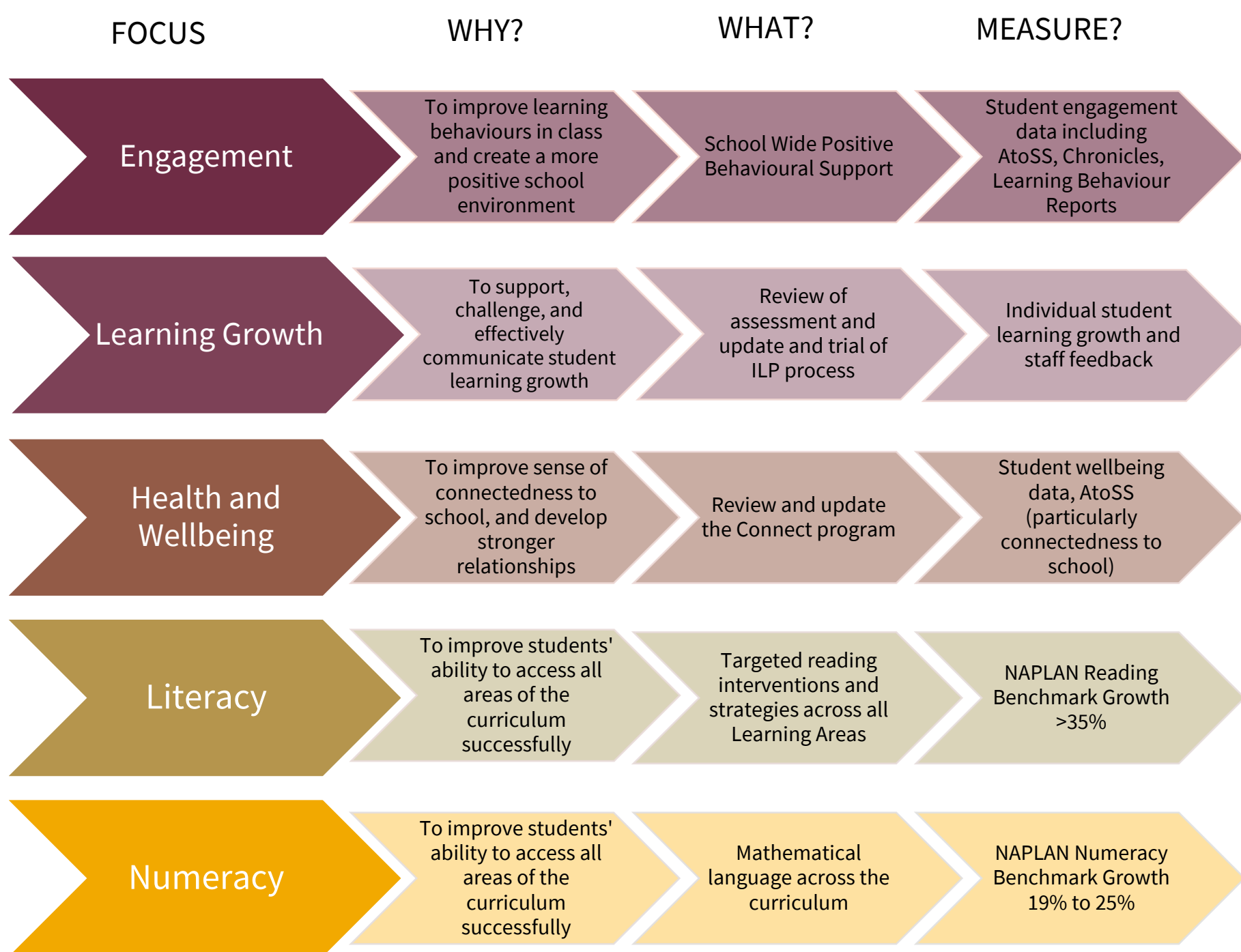


Vision

To collaboratively develop, lead and enact strategic decision-making that fosters improved student learning and wellbeing now and into the future.



Priorities 2023



Enablers

The meeting structure supports implementation of these 5 priorities through:

Learning Area (LA) Meetings

Increased time in 2023 for learning area teams to collaborate

Professional Learning Teams (PLT)

Teaching teams work together to unpack student learning data, diagnose learning challenges and then implement interventions to boost the learning outcomes of all students.

Staff Meetings

Whole school professional learning on our key priorities for the year

The following initiatives will continue throughout 2023 with an aim to improve student outcomes and to support delivery of the priorities outlined above:

Kew Learning Model (KLM)

A consistent instructional model helps both students and teachers to maintain high levels of focus on learning throughout *every lesson*

Learning Walks and Talks and professional observation

Staff observe each other to improve their own practice, and ensure they are learning from each other

Strong Student Voice and Agency

Students are involved in making decisions about their learning and their school